



IPS-3110

8 x 10/100/1000Base-T RJ-45
With 802.3af/at PoE+ +

2 x 10/100/1000Base-T RJ-45 /
100/1000Base-X SFP
(Combo)

Managed Industrial PoE Switch

Description

Connection Technology Systems (CTS) IPS-3110 Industrial PoE Switch is a Fast and Gigabit Ethernet 10/100/1000Base-T to 100/1000Base-X Industrial PoE Switch. It switches the traditional twisted-pair RJ-45 cable into various fiber optics media. IPS-3110 offers easy management of the uplink port (10/100/1000Mbps RJ-45 + 100/1000Mbps SFP slot). The fiber optical port of IPS-3110 can support various connection distances via multi-mode fiber, single-mode fiber or Bi-directional single-mode fiber for the deployment to the control room, warehouse, or factory.

The IPS-3110 Industrial PoE Switch is designed for deployment at industrial sites. With DIN-rail mounting, you can easily mount the Industrial PoE Switch at your sites such as factory or warehouse. The two Terminal Blocks can provide power redundancy to prevent any possible power outage and digital output to serve as an alarm.

The product provides perfect solution for delivering power over Ethernet for IP cameras, Wi-Fi access points, or IP phones at an extended operating temperature (-40°C ~ 75°C) to withstand against harsh environment for better performance. It is fully compliant with IEEE standards such as IEEE 802.3 / 802.3u / 802.3ab / 802.3az to ensure interoperability between network devices.

It also supports three different operating modes, offering the system integrators the flexibility of designing networks under different applications with just one piece of equipment. The complexity of the operation and the inventory pressure can therefore be both effectively reduced.

- **Compatible with IEEE 802.3af/at PoE+**

The support of IEEE802.3at/af PoE+ standard enables safe transfer of electrical power and the transmission of digital data over Ethernet cable.

- **Aluminum Housing**

The aluminum housing material provides a remarkable strength-to-weight ratio, capable of undergoing an arduous operating environment yet still staying portably light-weight.

- **PoE Budget 30W Max. per Port, 240W Max. Total**

The PSE (Power Sourcing Equipment) comes with intelligent PoE providing a maximum of 30W of power per port, allowing for meeting the needs of nowadays power-hungry PD (Powered Device).

- **Extended Operation Temperature -40°C ~ 75°C**

The extensive range ensures the reliable performance of mission-critical applications under extreme and rapidly changing temperatures.

- **48 ~ 55VDC Dual Power Input**

Two sets of power inputs ranging from DC 48V~55V bring you the seamless transition of power supply in case of a sudden outage on either set of power inputs.

■ Interface

- Downlink:
8 x 10/100/1000Base-T RJ-45
- Uplink:
2 x 100/1000Base-X SFP /
10/100/1000Base-T RJ-45
(Combo)
- 1 x USB2.0 (Host Type A)
- 1 x RS-232 (RJ-45)

■ PoE

- 8 x IEEE 802.3af/at (RJ-45)

■ Standards

- IEEE 802.3 10Base-T
- IEEE 802.3u 100Base-TX/FX
- IEEE 802.3ab 1000Base-T
- IEEE 802.3az EEE
- IEEE 802.3z 1000Base-X
- IEEE 802.1p Priority
- IEEE 802.1q Tag VLAN
- IEEE 802.3x Flow Control
- IEEE 802.3ad Link Aggregation
- IEEE 802.1D/IEEE802.1w STP/RSTP
- IEEE 802.1x Port based Network Access Control
- IEEE 802.3af Power over Ethernet
- IEEE 802.3at Power over Ethernet
Enhancements

■ H/W Specification

Store and Forward Switching Mechanism
Auto Crossover for MDI/MDI-X in TP Port
Auto Negotiation in TP Port
Half/Full Duplex Mode Operation
Jumbo Frame up to 9K Bytes
MAC Address Table 16K
Non-Blocking Switching Fabric 20Gbps
VLAN ID 4K
1 Digital Output(Alarm Relay)
6KV Ethernet Port Surge Protection

■ Forward / Filter Rate

10M : 14,880/14,880pps
100M : 148,800/148,800pps
1000M : 1,488,000/1,488,000pps

■ LED

P1, P2, ALM, RM, R, Status, LAN, PoE, F/O

■ Network Redundancy

STP/RSTP
CTS Fast Redundancy

■ Installation Type

DIN-Rail Mount, Wall Mount (Optional)

■ Switch Feature

IEEE 802.1q Tag Based VLAN
IGMP Snooping v1/v2
QoS Based on P-bit, VLAN, DSCP
Broadcast Storm Control
Port Mirroring
Port Trunking
Loop Detection
Time Range

■ Traffic Management

QoS, SPQ, WRR

■ Network Management

Telnet CLI
SNMP v1/v2c/v3
DHCP Client
FTP/HTTP/TFTP/USB Firmware Upgrade
Dual Image
SNTP
SSHv2
Eventlog
Syslog

■ Power Requirement

DC Input
- Redundant Input Terminals
Input Voltage
- DC: 48~55VDC
Power Consumption
- DC: 255W (8 Ports PoE Full Loading)

■ Environmental Condition

Operation: -40°C ~ 75°C
Storage Temperature: -40°C ~ 85°C
Humidity: 5% ~ 95%, Non-condensing

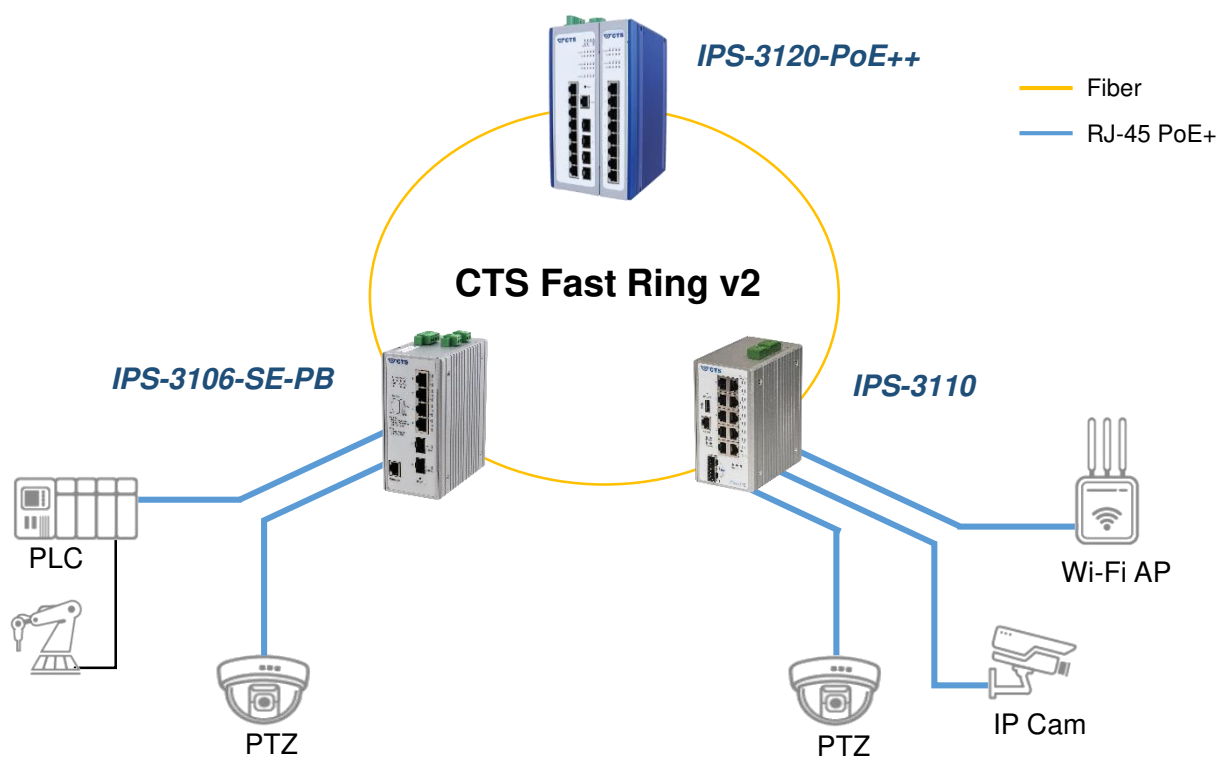
■ Dimension & Weight

Size: 73 x 110 x 135 mm (WxDxH)
Weight: 0.92Kg
Housing: Aluminum, IP40

■ EMC/Safety

FCC Class A, CE
ITU-T K.21
Shock: IEC 60068-2-27
Freefall: IEC 60068-2-32
Vibration: IEC 60068-2-6

Application Diagram



Order Information

IPS-3110

Model	Fiber Port					TP Port			Support Power Source
	Speed (Mbps)	Type	Connector	Distance	Port	Speed (Mbps)	Port	PoE	
IPS-3110SFP	100/1000	SFP	-	-	2	10/100/1000	8	Support	Terminal Block x 1 With Two Sets of Power Inputs
							2	-	

Connection Technology Systems (CTS) reserves the right to change specification without prior notice.

Accessory

Power Supply

Model	Description	Remark
SDR-240-48	48V/240W Din-Rail Power Supply	Working Temperature: -25°C ~ 70°C

SFP-31-D

Model	Fiber Port					
	Speed	Type	Connector	Distance	Wavelength	Temperature
SFP-31FC-D	1000Mbps	MM	LC	550M	850nm	-40°C ~ 85°C
SFP-31FC-(MM-02)-D	1000Mbps	MM	LC	2KM	1310nm	-40°C ~ 85°C
SFP-31FC(SM-10/20)-D	1000Mbps	SM	LC	10/20KM	1310/1310nm	-40°C ~ 85°C
SFP-31W2A(SM-10/20)-D	1000Mbps	WDM	LC	10/20KM	TX: 1310/1310nm	-40°C ~ 85°C
					RX: 1550/1550nm	
SFP-31W2B(SM-10/20)-D	1000Mbps	WDM	LC	10/20KM	TX: 1550/1550nm	-40°C ~ 85°C
					RX: 1310/1310nm	